

Office to let

Park Avenue

Bucharest, Sector 1, 93-95 Emanoil Porumbaru st.



Building information

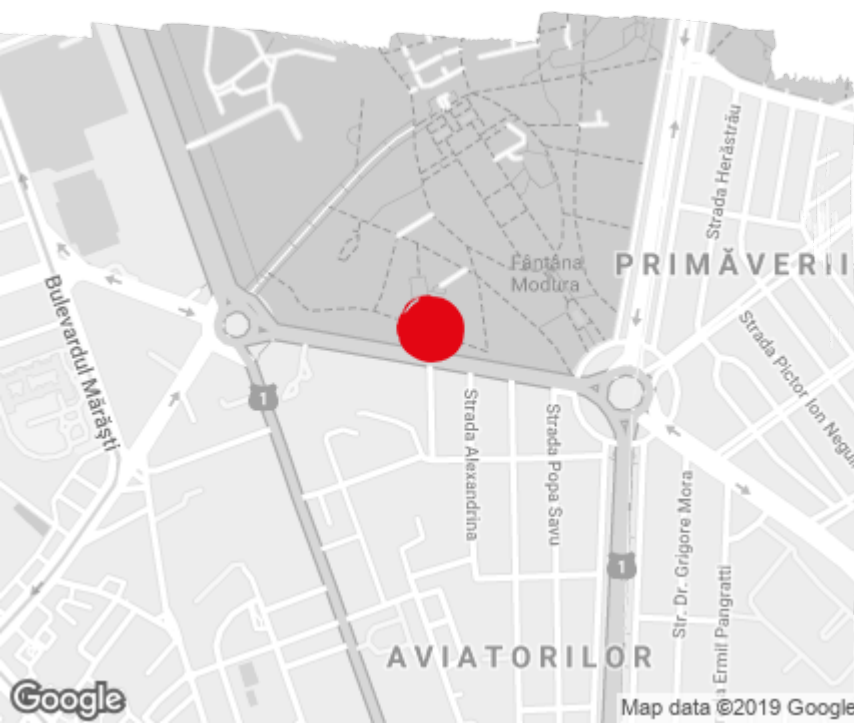
Building status	Existing
Year of construction	2016
Parking ratio	1 / 36 sq m
Total building area	5 500 sq m

Commercial terms

Office space*	after login *
Parking	after login *
Service charge*	after login *
Minimum lease term	after login *
Availability	after login *

* Asking terms for m²/month

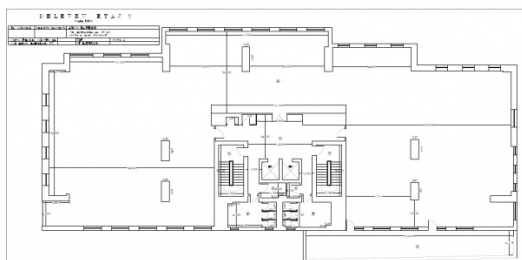
Location



Available space

Building completely leased

Typical floor plan



Public transport

Metro: M2

Bus: 131, 282, 330, 331, 335, 783

Contact



+40 21 302 3400

More information